



2025/26

Flying 11s National Championships

DEC 27 - JAN 2





CONTENTS

Welcome	1
Venue Arrival	2
Trailer Parking	4
Support Boat Launching & Mooring	6
Rigging Area	8
Racing Area	9
Schedule of Events	10
FAQ	11
Canteen Information	12
Club Information	13
Club Dining	14
Weekly Entertainment	15
Local Information	15
Our Club Legacy	16
Media Notice	16
Sponsors	17



Welcome to the 2025/26 Flying 11s National Championships

On behalf of Belmont 16ft Sailing Club, we are delighted to welcome competitors, their families, and friends to the 2025/26 Flying 11 Australian Championships. It is a true honour for us to host this prestigious event, and we are confident you'll enjoy the exceptional sailing conditions here on Belmont Bay. As the largest saltwater lake in the Southern Hemisphere, Belmont Bay offers a vast expanse of deep water, perfect for racing, with steady sea breezes and no tidal influences, making it one of the finest sailing venues in Australia.

With over 100 years of sailing history, our Club is proud to offer world-class facilities and a thriving junior program that continues to nurture the next generation of exceptional sailors.



Located on the shores of Lake Macquarie, the Club features panoramic views, four bars, a café, and four distinct dining experiences, each designed to suit different tastes and occasions. It's the perfect place to relax and take in all the on-water action. (More information about these venues can be found on page 13).

Our state-of-the-art sailing facilities include advanced race control technology and a dedicated spectator deck with unbeatable lake views. Families will love the children's play area, and everyone can unwind on the foredeck, which offers breathtaking 180-degree views of the water.

We hope you have a truly unforgettable experience at this year's championships, both on and off the water!

PRO TIP

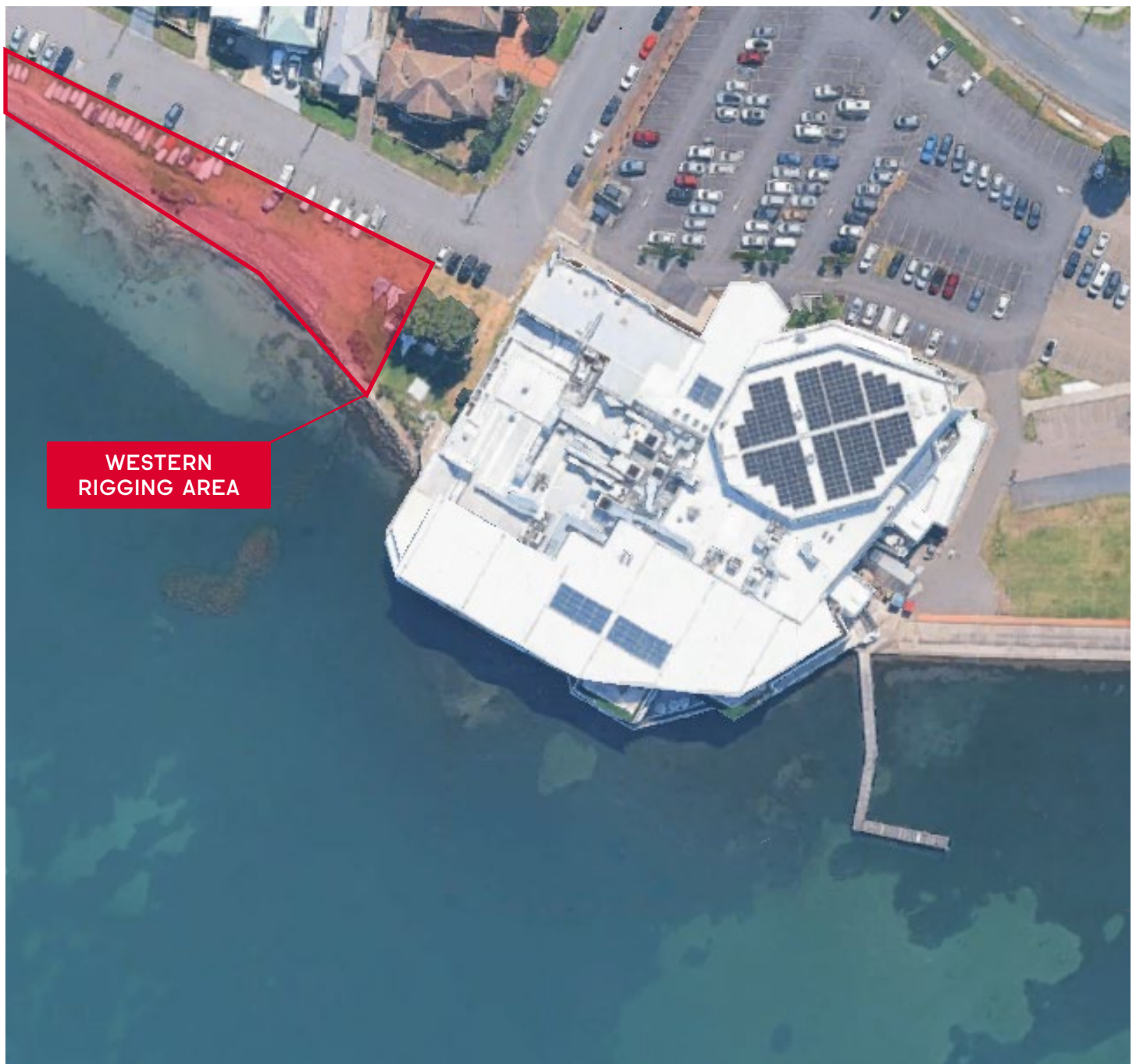
Join as a member before you arrive to enjoy exclusive benefits. Details on how to join can be found later in this handbook (see page 13).



Venue Arrival Information

The Belmont 16ft Sailing Club (B16ftSC) is located at The Parade, Belmont, NSW 2280. For the duration of the event, we have secured Laughlin Park, located directly across the road, for parking of Flying 11 trailers and support boat trailers.

Upon arrival, all boats are required to complete the event registration for boat and sail registration.



Upon arrival, Flying 11s will be directed to unload their boats before being guided by parking marshals to the designated trailer storage area. Flying 11s will have the opportunity to unload their boats and equipment, before being directed to store their trailers in Laughlin Park across the road.

Please note that NO boat trailers are to be parked in the Belmont 16s car park. Boats may also rig and utilise the Western rigging area and public parking throughout the regatta.

Trailer Parking

FLYING 11 TRAILER STORAGE - LAUGHLIN PARK

We are grateful to the Lake Macquarie City Council for their approval to store boat trailers for visiting Flying 11s in a designated, cordoned area of Laughlin Park from Saturday, 27th December to Sunday, 2nd January 2026. The allocated storage area is located in the northeastern corner of Laughlin Park, bordered by Evans Street, Tudor Street, Ross Street, and the concrete pedestrian pathway.

Please adhere to the following guidelines:

- The concrete pedestrian pathway through the park must remain clear of boat trailers at all times.
- Whenever possible, trailers should be manoeuvred by hand, not by motor vehicle, to maintain a smooth flow of traffic and avoid congestion.
- Access to the storage area is via Tudor Street only, through the designated entry point, to help minimise traffic congestion.

Flying 11s are also welcome to store their trailers on the Western side of the club along The Parade. On the western side, please obey the parking signage instructions, unfortunately parking enforcement are stringent.



IMPORTANT

Flying 11 trailers must not be left in the Belmont 16s Club car park under any circumstances.



Support Boats Launching & Mooring

TRAILER PARKING & STORAGE

Support boat trailers must not be parked in the Club car park. Please do not drive into the car park or park across multiple spaces.

Where possible we ask that support boat trailers be stored at accommodation off site. Where this is not possible provision is made to store road trailers in a cordoned section of Laughlin Park, located directly across the road from the Club. Trailers may be left here for the duration of the regatta.



LAUNCHING

The Club's launching ramp is always busy during regattas with race management boats.

We ask that support boats be launched at one of the local public ramps listed below:

Public Launching Ramps:

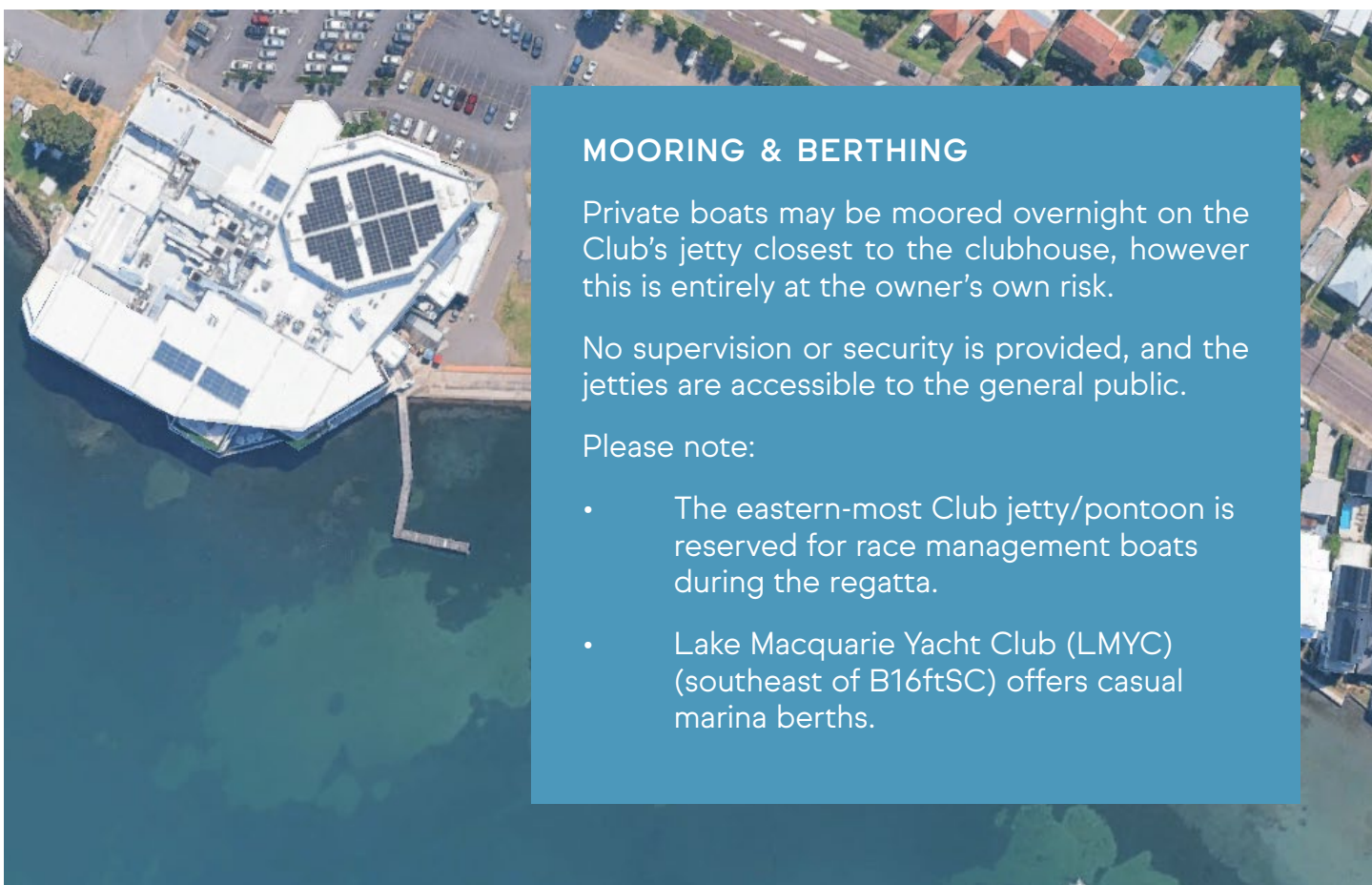
- Pelican – End of Naru Rd (off Pacific Hwy)
- Pelican – End of Soldiers Rd (off Pacific Hwy)
- Swansea – Thomas Humphreys Reserve, end of Channel St (off Pacific Hwy)
- Valentine – Bennett Park, off Dilkera Ave
- Eleebana – NW end of Thomas Halton Park, off Bareki Rd (opposite Moani St)
- Eleebana – Warners Bay Lions Park, off Bareki Rd (opposite Glad Gunson Dr)

RE-FUELLING

Marks Point Marina (located directly south across Belmont Bay from B16ftSC) offers:

- Fuel
- Ice
- Chandlery supplies
- Mechanical and shipwright repairs





MOORING & BERTHING

Private boats may be moored overnight on the Club's jetty closest to the clubhouse, however this is entirely at the owner's own risk.

No supervision or security is provided, and the jetties are accessible to the general public.

Please note:

- The eastern-most Club jetty/pontoon is reserved for race management boats during the regatta.
- Lake Macquarie Yacht Club (LMYC) (southeast of B16ftSC) offers casual marina berths.

Rigging Area

We have two main rigging areas available: however as it is also peak trading period for the club, part of the larger area to the east of the main clubhouse will be utilised and designated as a car park. Therefore Flying 11s are permitted to rig on the concrete apron in middle rigging area and the area in front of the Brian Ellis Boat Shed. Boats are also permitted to rig and launch on the Council land to the west of the main clubhouse.

RIGGING AREA RESTRICTIONS

Please note that no boats are permitted to rig in the Emergency Zone (highlighted in red on diagram below). This area must remain clear to ensure access for emergency vehicles and all club rescue resources.

Do not rig on paved driveways or in front of the loading dock. Trucks must have ample room to reverse into the loading dock, so please ensure the area is kept clear. Additionally, please avoid blocking any driveways.

Please rig on the concrete apron closest to the water and keep the boat ramp clear for launching and retrieval. Your cooperation helps keep everyone safe and operations running smoothly.





Racing Area

At Belmont 16s Sailing Club, we are fortunate to have direct access to the beautiful Belmont Bay, providing the perfect backdrop for all of our club and event racing. This unique waterfront location allows spectators, families, and friends to experience the thrill of the races while enjoying the comfort and facilities of the club. The positioning of the racecourse, just a stone's throw from the club, ensures that no spectator misses a moment of the action. Whether you're watching from the comfort of the club or cheering from the waterfront, Belmont 16s Sailing Club offers an unparalleled racing experience.

Schedule of Events

DATE	EVENT	TIME / FIRST WARNING SIGNAL	VENUE
SAT 27 DEC	Measurement / Registration	13:00 – 16:00 hrs	
SUN 28 DEC	Registration / Measurement Competitors Briefing	08:00 – 10:00 hrs 10:00 hrs	Auditorium
SUN 28 DEC	Invitation Race Racing	12:00* 13:00*	
SUN 28 DEC	Welcome Social Gathering	After Racing	Rigging Area
MON 29 DEC	Racing Social/BBQ	13:00 hrs* After Racing	Rigging Area
TUES 30 DEC	Racing Social/BBQ	13:00 hrs* After Racing	Rigging Area
WED 31 DEC	Reserve Day		
THURS 1 JAN	Racing Social/BBQ	15:00* After Racing	Rigging Area
FRI 2 JAN	Racing	12:00 hrs*	
FRI 2 JAN	Awards Presentation	After Racing	Auditorium

* Warning signal, the race will not occur before the time indicated.

Frequently Asked Questions

Q. WHAT IF I NEED URGENT ACCESS TO SOMETHING IN MY TRAILER WHEN RIGGING?

A. Your trailer will be within reach of your boat, designated trailer parking is across the road from the Belmont 16ft Sailing Club and a mere 200 metres from Middle rigging area.

Q. IS THERE A SAIL MAKER IN THE AREA FOR REPAIRS?

A. Yes Belmont 16s is fortunate to have multiple sail makers in the area, including, East Coast Marine and Sails, TSails, Ullman Sails, MEB Sails, Lake Mac Marine and MC Sails.

Q. WHERE CAN I BUY BOAT PARTS & MAINTENANCE ITEMS?

A. RTM at Bennetts Green is closest. In addition, Whitworths Marine is located at Lambton NSW, approximately 25-30 minutes away. Marine Outlet located at Morriset, NSW.

Q. ARE THERE ANY OTHER PUBLIC CAR PARK & BOAT RAMP FACILITIES THAT WE CAN USE FOR RIGGING?

A. There are other public areas along the foreshore that may be suitable for rigging. However, we cannot guarantee security throughout the week and or parking availability.



MORE INFORMATION

More information can be found at
<https://www.revolutionise.com.au/feaa/events/285671>

Regular updates regarding the event are also provided on the Belmont 16ft Sailing Club Facebook page and shared on the Flying 11 Nationals page. We encourage you to follow these pages. <https://www.facebook.com/flying11australia> and <https://www.facebook.com/Belmont16ftSailingClub/>

Communication protocols for competitors regarding the regatta will be managed by the Flying 11 Association.



For details on travel
radius, transfer times
and booking method
click here

<https://www.16s.com.au/sailing>

Canteen Details & Opening Times

The canteen is conveniently located next door to the Brian Ellis Boat Shed and offers a variety of drinks, coffee and lights snacks. The canteen will be open daily during the Championship.

CHAMPIONSHIP PERIOD DAILY HOURS

SUN 28 DEC: 9:00am – 12:00pm

MON 29 DEC: 10:00am – 12:30pm

TUES 30 DEC: 10:00am – 12:30pm

WED 31 DEC - Closed (Reserve Day)

THURS 1 JAN - Closed (New Years Day)

FRI 2 JAN: 9:00am – 12:00pm



Club Information

Join our Club online before you arrive at www.16s.com.au/join to enjoy member benefits including 10% off food and beverages on the ground floor, exclusive meal deals, loyalty points that convert to dollars, and eligible entry into our Thursday members' draws.

CLUB LOCATION

The Parade, Belmont NSW 2280
Located right on the shores of Lake Macquarie.

OPENING HOURS

Monday - Sunday: 9am till late
Club access hours may vary during regatta week.

DRESS CODE

Casual style is welcome, however:

- Footwear and shirts must be worn at all times
- Wet clothing or sailing gear is not permitted inside
- Standard Club dress codes apply in dining areas

MINORS

All minors must be accompanied by a responsible adult while in the Club at all times and must be offsite by 10pm.

ACCESSIBILITY

- Wheelchair access is available throughout the Club
- Ramp access is located at the main entrance
- AED (defibrillator) machines are located in the Brian Ellis Boat Shed and inside the Club

PETS

Please note, no dogs or other pets are permitted within the Club.

SMOKING

Designated smoking areas are provided, please ask our friendly team for directions.

Club Dining

The Club offers a variety of dining experiences for every taste, from casual lakeside eats to contemporary dining.

BLEND CAFÉ

A relaxed, walk-in café offering coffee, light bites, and sweet treats. No bookings required.

Open 9am till late, 7 days.

THE BOAT SHED SPORTS BAR & BURGER BROS

Walk-in dining with family-friendly favourites.

During peak times, bookings are recommended for groups of 6 or more.

Dinner Wednesday - Sunday

Lunch Saturday and Sunday

SALT KITCHEN & SAILS EATERY

A showcase of fresh local produce and modern Australian flavours. Perfect for larger bookings, up to 30 guests.

Lunch and Dinner, 7 days.



MARTHA

Casual Contemporary dining, Italian influence and classic cocktails.

\$49 pasta and cocktail special
Thursday dinner and Friday lunch!

Thursday - Saturday Dinner

Friday - Sunday Lunch

Please note: not open public holidays

To view menus
and book a table,
click here

[https://linktr.ee/
belmont16s](https://linktr.ee/belmont16s)



Weekly Entertainment

Join us for free live entertainment and Club events throughout the week.

LIVE MUSIC

Every Friday and Saturday night

TRIVIA NIGHT

Wednesday evenings (free to play!)

MEMBERS DRAW & RAFFLES

Thursday nights

SUNDAY VARIETY RAFFLE

1:30pm

View all the details here

<https://linktr.ee/belmont16s>



Local Information

NEARBY ESSENTIALS

Nearest Hospital: Belmont Hospital
(Croudace Bay Rd, Belmont)

Nearest Chemist: Priceline Pharmacy,
Belmont Central Shopping Centre

ATM: Located within the Club

Please be respectful of our neighbours by keeping noise and access clear when leaving the Club or surrounding areas late at night.





Our Club Legacy

Founded in 1922, Belmont 16ft Sailing Club has been a cornerstone of Australian sailing for over a century. As one of the nation's most respected sailing venues, the Club continues to nurture the sport through youth programs, world-class regattas, and a strong community spirit.

We invite visiting sailors and supporters to learn more about our sailing programs and the Belmont 16s Sailing Foundation, which funds youth development and racing initiatives.

Learn more or contribute here: Belmont 16s Sailing Foundation Page

<https://16s.com.au/sailing/foundation/>

Media Notice

Throughout the regatta, Club staff and official photographers will be capturing photos and video footage.

If you do not wish to be photographed, please notify Regatta Manager Nadine Steenson during the event.



Sponsors



RED PUMPS
QUALITY CONCRETE PUMPING

RED PUMPS

Red Pumps is a privately owned Concrete Pumping company established in 2017 in response to the growing demand for professional, efficient and high quality concrete pumping on the Central Coast Newcastle and Northern Sydney.

<https://www.redpumps.com.au>



allen

ALLEN BROTHERS

Allen Brothers is a world leader in precision-engineered sailing hardware, founded in the 1950s by brothers Tony and Glenn Allen. Inspired by their passion for sailing and innovation.

<https://www.allenbrothers.co.uk>

SAIL RACING

Sail Racing is a highly specialized company that is focused on constructing the most innovative and technical gear for high speed sailing. Our aim is to develop durable and long-lasting performance garments for future generations and high speed sailors using innovative and environmentally sustainable production methods and fabrics.



LTROS

LIROS is a German manufacturer of high-tech marine, sports, and industrial ropes, known for top-quality, innovative production fully carried out in Germany. Using advanced systems like the LIROS Heat-Stretch-System, they produce durable, low-stretch, high-strength ropes for demanding applications such as sailing, kitesurfing, and paragliding, and also offer custom solutions.





MC SAILS

Our racing sails compete all over Australia, and are regularly seen on the podiums of National and State Championships across many Dinghy, Skiff and Catamaran classes. Class development is our specialty, so if you want to move up the fleet just give us a call and we will work with you to produce the results you deserve.



CST COMPOSITES



CST Composites is an Australian company that designs and manufactures high-quality, cost effective composite products, specialising in filament wound tubing for the marine, industrial, and high-tech markets. Founded in 1995, the company is a leading user of carbon tow in Australia and New Zealand, using its advanced filament winding technology to create a wide range of custom and standard composite tubes, profiles, and other components.



RED PUMPS
QUALITY CONCRETE PUMPING

 **allen**

